

Printed Help Document



Report Generator for TDSPWR3

Copyright and Version Information

Copyright © Tektronix, Inc. All rights reserved. Licensed software products are owned by Tektronix or its suppliers and are protected by United States copyright laws and international treaty provisions.

Use, duplication or disclosure by the Government is subject to restrictions as set forth in subparagraph (c)(1)(ii) of the Rights in Technical Data and Computer Software clause at DFARS 252.227-7013, or subparagraphs (c)(1) and (2) of the Commercial Computer Software - Restricted Rights clause at FAR 52.227-19, as applicable.

Tektronix products are covered by U.S. and foreign patents, issued and pending. Information in this documentation supercedes that in all previously published material. Specifications and price change privileges reserved.

Tektronix, Inc. P.O. Box 500, Beaverton, OR 97077

TEKTRONIX, TEK, and TEKPROBE are registered trademarks of Tektronix, Inc.

MATLAB is a trademark of The MathWorks, Inc

Report Generator Printed Help Document Version 1.0.1

Table of contents

REPORT GENERATOR.....	1
USING REPORT GENERATOR	1
Shortcut Keys for Report Generator	1
ABOUT TEMPLATE EDITOR.....	3
Template Editor Window.....	4
View> Palette Toolbar.....	4
Native Fields.....	5
Rectangle	6
Oscilloscope Fields.....	8
Template Editor File menu	9
Template Editor Edit menu.....	9
Template Editor View menu.....	9
Template Editor Object menu.....	10
Template Editor Window menu.....	10
Template Editor Help menu.....	11
Standard Toolbar View > Toolbar > Standard.....	11
Align/Size View > Toolbar > Align/Size.....	11
Layout Toolbar View > Toolbar > Layout	12
Action toolbar	12
Status bar.....	12
Template Editor Edit menu	12
Using Template Editor.....	13
Creating Custom Groups-Edit > Create Custom Group	13
Editing Custom Groups- Edit > Edit Custom Group.....	14
Delete Custom Groups -Edit > Edit Custom Group	15
Change Template Size -Edit > Change Template Size	16
Select All -Edit > Select All	17
Find -Edit > Find.....	17
Replace -Edit > Replace	18
Bring To Front -Object > Bring To Front.....	18
Send To Back Object > Send To Back	18
Show/Hide Text -Object > Show/Hide Text.....	18
Position Caption-Object > Position Caption to the Left, or on Top	18
Editing Caption -Object > Edit Caption.....	18
Change Font Object > Change Font.....	19
Align Fields -Object > Align Fields.....	19
Make Same Size Object > Make Same Size	20
REPORT LAYOUT EDITOR	21
Report Layout Editor Default Settings	22
Report Layout Editor Window.....	22
List of Templates pane.....	22

Report Layout pane	23
Report Layout Editor File menu	25
Report Layout Editor Edit menu	25
Report Layout Editor View menu	25
Report Layout Editor Layout menu	26
Report Layout Editor Page menu	26
Report Layout Editor Help menu	26
Report Layout Editor Standard toolbar	26
Report Layout Editor Layout toolbar	27
Report Layout Editor Page toolbar	27
Report Layout Editor Action toolbar	27
Using Report Layout Editor	28
Configure Page	29
Go To Page	30
Change Report Layout	30
Header/Footer Definition	31
Insert Pages	32
REPORT VIEWER	33
Report Viewer Window	33
Report Viewer File menu	33
Report Viewer Edit menu	34
Report Viewer View menu	34
Report Viewer Object menu	34
Report Viewer Help menu	35
Report Viewer Standard Toolbar	35
Report Viewer Align or Size bar	35
Report Viewer Status bar	36
Report Viewer Separators	36
Using Report Viewer	36
Export to RTF	37
Find	37
Replace	37
Bring To Front	38
Send To Back	38
Show/Hide Text	38
Position Caption	38
Edit Caption	38
Change Font	39
Make Same Size	40
Align Fields	40
USING REPORT GENERATOR	41
Create or edit a test template	41
Define or edit a report layout	42
Generate, print or view a report	43

Report Generator

The Report Generator enables you to generate and print reports directly from the oscilloscope. It enhances the TDSPWR3 application capabilities by simplifying the process of creating and maintaining reports.

The Report Generator automates the process of compiling the test results and generating the reports. It allows you to set up the template layout using the factory default templates or custom templates. The Report Generator allows you to save files in the custom file formats such as .rgt, .rpl, or .rpt. The generated reports can also be saved as an .rtf file. The Report Generator is integrated with the TDSPWR3 application.

Using Report Generator

Report > Report Generator

You can generate and print reports directly from the oscilloscope.

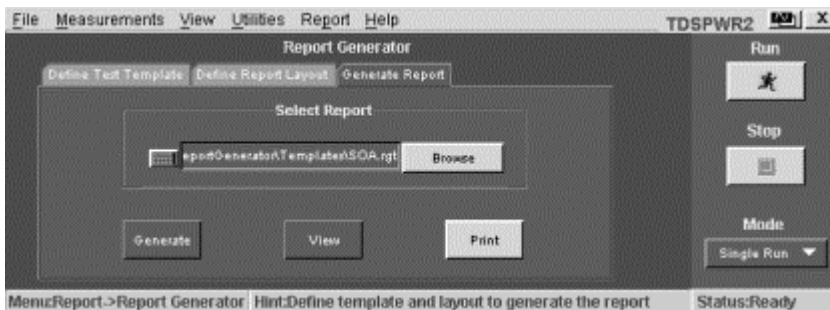


Figure 1- 1: Report Generator Screen

Perform the following steps to generate a report:

1. Create a new or edit an existing test template.
2. Define a new or edit an existing report layout.
3. Generate, print, or view a report.

[Click here to go back to the TDSPWR3 Printed Help Document.](#)

Short cut Keys for Report Generator

Table 3-31 lists the shortcut keys for report generator

Table 3-31: Shortcut keys for report generator

Action / common keys	Shortcut keys
Open	Ctrl+O
Save	Ctrl+S
Template editor	
New	Ctrl+N
Find	Ctrl+F
Replace	Ctrl+H
Print	Ctrl+P
Cut	Ctrl+X
Copy	Ctrl+C
Paste	Ctrl+V
Delete	Del
Select all	Ctrl+A
Bring to front	Ctrl+Plus
Send to Back	Ctrl+Minus
Edit Text	Alt+Enter
Report layout	
New	Ctrl+N
GoTo	Ctrl+G
Refresh Template List	F5
Report viewer	
Find	Ctrl+F
Select All	Ctrl+A
Del	Del
GoTo	Ctrl+G
Bring to front	Ctrl+Plus
Send to Back	Ctrl+Minus
Edit Text	Alt+Enter

About Template Editor

The Report Generator allows you to create templates apart from providing you with factory default templates. Use the Template Editor to create and edit templates in the .rgt format (report generator template). A template stores the fields and their positions. You can save the templates and reuse them in any number of reports or report layouts. You can cut, copy, and paste across templates. Once the report is generated, the application fills in the fields of the template using the acquired data from the oscilloscope.

The Template Editor has a palette list that displays the following groups of fields: the TDSPWR3 Fields, Oscilloscope Fields, and Native Fields as shown in Figure. The template editor provides you with the option to create custom groups; these groups once created, appear in the palette list. The fields are listed according to the group selected. You can use these fields to design and create a template.

You can place the fields in the template, and then move and size them appropriately. Multiple fields can be selected and placed in the template. You can select more than one field and make the following changes: cut, copy, paste, align, delete, size, edit font, and change caption of the fields.

Once a template is defined and saved, either click Done to close the template editor, or use the Layout icon to directly go to the report layout editor.

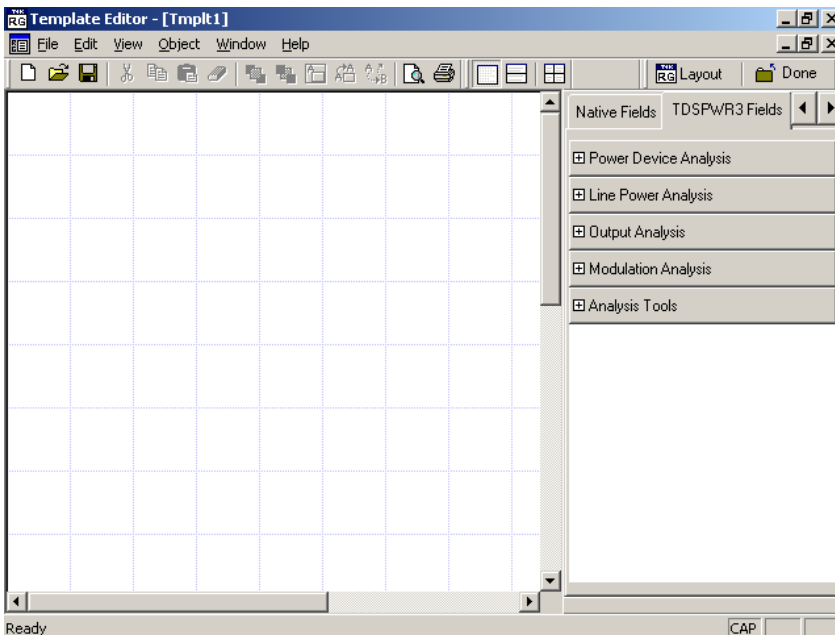


Figure 2- 1: Template Editor Window

Table 3-32: Template Editor Default Settings

Parameter	Selection	Default setting
Page Size	Change Template Size	8.5x11inches
Palette List	None	Displays application fields by default. If there are no application fields, the oscilloscope fields are displayed.
Static Text	Static Text	Inserts My Static Text.
Fields	None	The default size of the field dragged into the template is 200 X 300 pixels.

Template Editor Window

The Template Editor window comprises a menu bar, a toolbar, a client area, a palette list, and a status bar. When you select the New Template button in your application, the client area in the Template Editor Window is empty. When you select the Edit Template button in your application, the client area displays the selected template.

See the following topics for more information about each of these interface elements:

View> Palette Toolbar

The Palette List is a floating toolbar that has a list of Native Fields, TDSPWR3 fields, and oscilloscope fields grouped logically. You can drag and drop fields from the palette list into the template. The palette toolbar is displayed by default; you can show or hide the toolbar by selecting View> Palette Toolbar.

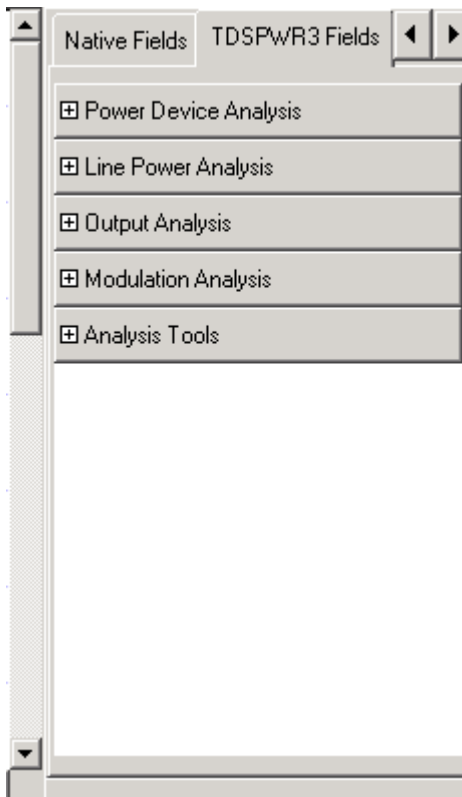


Figure 2-2: Palette List

The Palette list groups the fields into the following categories:

- Native fields — Static Text, Rectangle, Line, Logo, Table, Date and Time.
- <Application> fields — fields related to the application. The <Application> is replaced with the application from which you opened Report Generator. As you have opened Report Generator from TDSPWR3, the <Application> field is displayed as TDSPWR3 fields.
- Oscilloscope fields — Groups of fields related to the data acquired from the oscilloscope.
- Custom groups — custom groups created.

Native Fields

You can enhance the report using the following parameters from the Native fields — Static Text, Rectangle, Line, Logo, Table, Date, and Time.

You can drag any fields from the Native field and drop it in the active template.

Static Text

From the Native fields, drag and drop the static text.

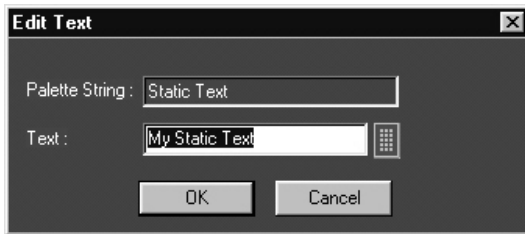

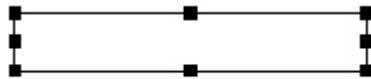


Figure 2-3: Edit Text

1. In the Edit Text dialog box,
 - Click .
 - In the Virtual Keyboard, select the text and select Enter.
2. Click OK.

Rectangle

From the Native Fields, drag and drop the Rectangle into the Active Template.



The black squares that appear at the corners of the rectangle allow you to increase the size.

Line

From the Native Fields, drag and drop the Line into the Active Template.



The black squares that appear at the corners of the line allow you to increase the size.

Logo

1. From the Native Fields, drag and drop the Logo into the Active Template.

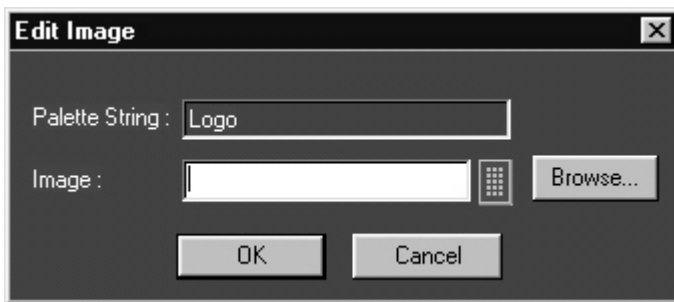



Figure 2-4: Edit Image

2. In the Edit Image dialog box,
 - Select .
 - In the Virtual Keyboard, enter the path and filename and select Enter.
Or
 - Select Browse to navigate to the location where the image is available.
3. Click **OK**.

Table

1. From the Native Fields, drag and drop the Table into the Active Template.

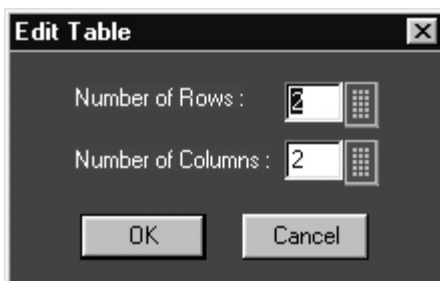



Figure 2-5: Edit Table dialog

2. In the **Edit Table** dialog box, you can select the number of rows and columns.
 - Select  next to Number of Rows and Number of Columns to edit the number.
 - In the Virtual Keypad, enter the number and select Enter.
3. Click **OK**.

Date and Time

From the Native fields, drag and drop the Date and Time.

Oscilloscope Fields

These fields are grouped into ten different groups:

1. Fields

- **Waveform Group:** The Waveform group has all the active live channels and independent channels (only CH1 to CH4) waveforms in both jpeg and bmp. These waveforms are generated to smoothen out the stair-step effect seen on the display.
- **Vertical Group:** The Vertical group has all vertical related fields such as the vertical scale, position, offset, and others.
- **Horizontal Group:** The Horizontal group has all horizontal related fields such as the horizontal divisions, scale, record length, position, sample rate, and others.
- **Math Group:** The Math group has all the math related fields such as the math definition for a specified math channel, magnitude, spectral gate, spectral phase, spectral window, spectral frequencies of the math channel, and others.
- **Trigger Group:** The Trigger group has all trigger related fields such as the trigger type, mode, level, and various fields related to different trigger types.
- **Measurement Group:** The Measurement group has all the measurements such as the eight automated measurements and the immediate measurements.
- **Acquisition Group:** The Acquisition group has all acquisition related fields such as the acquisition mode, acquisition state, repetitive mode, fast acquisition mode, and others.
- **Cursor Group:** The Cursor group has all the cursor related fields such as the cursor mode, source, state and type of the cursor, H Bars, V Bars, and others.
- **Zoom Group:** The Zoom group has all zoom related fields such as the zoom horizontal position, horizontal scale, and others.
- **Histogram Group:** The Histogram group has all histogram fields such as the co-ordinates of histogram box. mode, size, source, and others.
- **Screen snapshot:** The Screen Snapshot group has two variations: one in color and the other in black-and-white. For these screenshots, the attributes are graticule, ink-saver, and jpeg.

Template Editor | File menu

Table 3-33 lists the File menu descriptions.

Menu selection	Description
New	Creates a new template.
Open	Opens a template file.
Close	Closes the active template.
Save	Saves changes to the file.
Save As	Saves the template to a different file name using the Save as dialog box.
Print	Prints all or part of the contents of the active template.
Print preview	Displays a sample view of the active template as it would be printed.
List of recent templates	Opens a previously (recent) opened template.
Exit	Closes the Template Editor.

Template Editor | Edit menu

The available Edit menu selections depend on whether a template is active or not. In other words, the client area is empty or has a template open.

Table 3-34 lists the Edit menu descriptions.

Menu selection	Description
Cut	Cuts the selected fields.
Copy	Copies the selected fields.
Paste	Pastes the clipboard content.
Delete	Deletes the selected fields.
Select All	Selects all the fields.
Edit Custom Group	Edits the custom group.
Change Template Size	Changes the template size.
Find	Finds the data matching the search criteria.
Replace	Replaces the data matching the search criteria with the specified data.

Template Editor | View menu

A tick mark (✓) appears next to the selected menu item.

Table 3-35 lists the View menu descriptions.

Table 3-35:View menu descriptions

Menu selection	Description
Toolbar	Displays/Hides the toolbars selected such as Standard, Align Size, Layout, and Action.
Status Bar	Displays/Hides the Status bar.
Palette Bar	Displays/Hides the Palette Bar.
Grid Lines	Displays/Hides the Grid Lines in the client area.

Template Editor | Object menu

The available object menu selections depend on whether a parameter in the client area is selected or not.

Table 3-36 lists the Object menu descriptions.

Table 3-36 Object menu descriptions

Menu selection	Description
Bring To Front	Brings the selected fields to front.
Send To Back	Sends the selected fields to back.
Hide Text / Show Text	Shows or hides the caption of the selected parameter.
Position Caption on Top/to the Left	Positions the caption of the selected parameter to left or on top.
Edit Caption	Allows you to edit the caption of the selected parameter.
Change Font	Allows you to change the font of the selected parameter or the caption using the Change Font dialog box.
Align Fields	Aligns fields to top, bottom, left, or right.
Make Same Size	Resizes the selected objects to the same size by height, width, or both.

Template Editor | Window menu

Table 3-37 lists the Window menu descriptions.

Table 3-37: Window menu description

Menu selection	Description
New Window	Opens a new window duplicating the current active window.
Cascade	Arranges the open templates in the client area from the upper, left side to lower right side so that they overlap one another.
Tile	Arranges the open templates horizontally and vertically in the application client area without overlapping.
Arrange Icons	Arranges the icons of any templates you have minimized to the bottom-left of the window.
List of open templates.	Allows you to jump to another open template.

Template Editor | Help menu

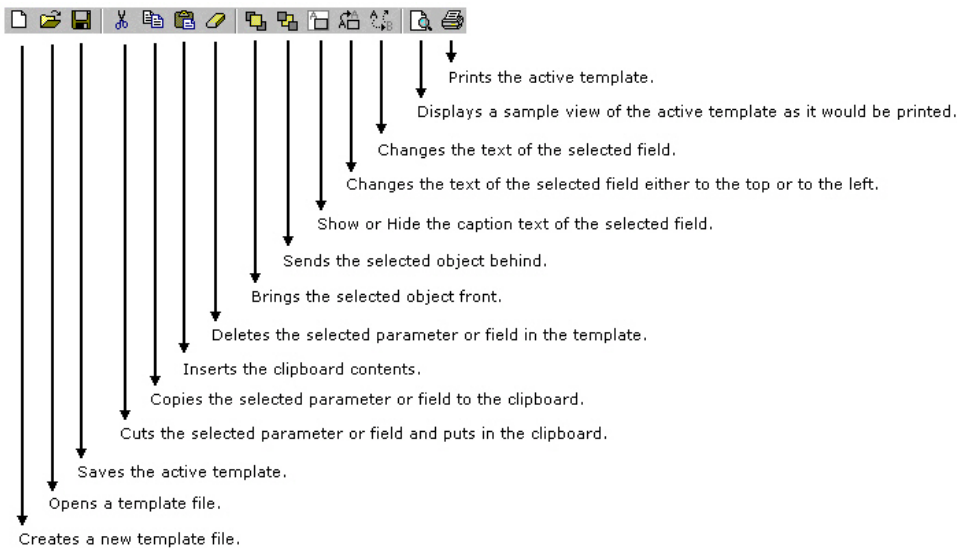
The available Edit menu selections depend on whether a template is active or not. In other words, the client area is empty or has a template open. Table 3-38 lists the Help menu descriptions.

Table 3-38: Help menu descriptions

Menu selection	Description
Help Topics	Displays the online help.
About Template Editor	Displays version and copyright information.

Standard Toolbar View > Toolbar > Standard

Enable the Standard Toolbar by selecting it in the View >Toolbar menu.



Align/Size View > Toolbar > Align/Size

Enable the Align/Size Toolbar by selecting it in the View >Toolbar menu.



- Aligns the left edge of the selected fields with the dominant field.
- Aligns the right edge of the selected fields with the dominant field.
- Aligns the top edge of the selected fields with the dominant field.
- Aligns the bottom edge of the selected fields with the dominant field.
- Resizes the selected field to have the same width as the dominant field.
- Resizes the selected field to have the same height as the dominant field.
- Resizes the selected field to have the same size as the dominant field.

Layout Toolbar View > Toolbar > Layout

Enable the Layout Toolbar by selecting it in the View >Toolbar menu.

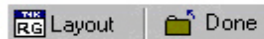


- Changes current template size to one test per page.
- Changes current template size to two tests per page.
- Changes current template size to four tests per page.

Action toolbar

View > Toolbar > Action

Enable the Action Toolbar by selecting it in the View >Toolbar menu.



- Closes the application and opens Report Layout Editor.
- Prompts to save documents and quits the application.

The Layout button also prompts to save documents.

Status bar

The Status bar displays the status of the application and tool tips for selected options

Template Editor | Edit menu

The available Edit menu selections depend on whether a template is active or not. In other words, the client area is empty or has a template open.

Using Template Editor

To create a template:

1. From the Palette List, drag and drop the fields that you want in the report.
2. If you drag and drop a group from the Palette List, all the fields within the group are placed in the active template.
3. Organize the fields as you want them to appear in the report.
4. After you have finished creating the template, select File > Save.

To edit an existing template:

1. Organize the fields as you want them to appear in the report.
2. From the Palette List, drag and drop the fields that you want in the report.
3. If you drag and drop a group from the Palette List, all the fields within the group are placed in the active template.
4. Organize the fields as you want them to appear in the report.
5. After you have finished editing the template, select File > Save.
 - You can create custom group, edit custom group, and change template size.
 - You can also edit caption, change font, align fields, and make selected fields same size.

For more information on application interface of the Template Editor, refer to Template Editor Window.

Creating Custom Groups- Edit > Create Custom Group

You can create custom groups using any fields from the Palette List.

1. Select Edit > Create Custom Group.

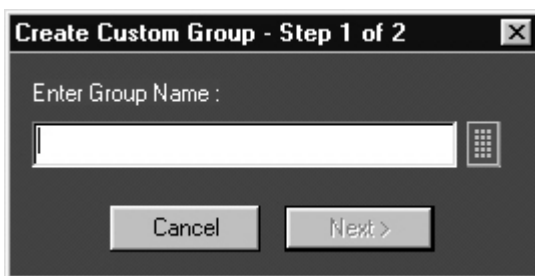


Figure 2-6: Create Custom group

2. In the Create Custom Group dialog box, enter the group name. You can enter the group name using the Virtual Keyboard.
3. Click Next. The Select Fields dialog box displays all the fields of the Palette List.

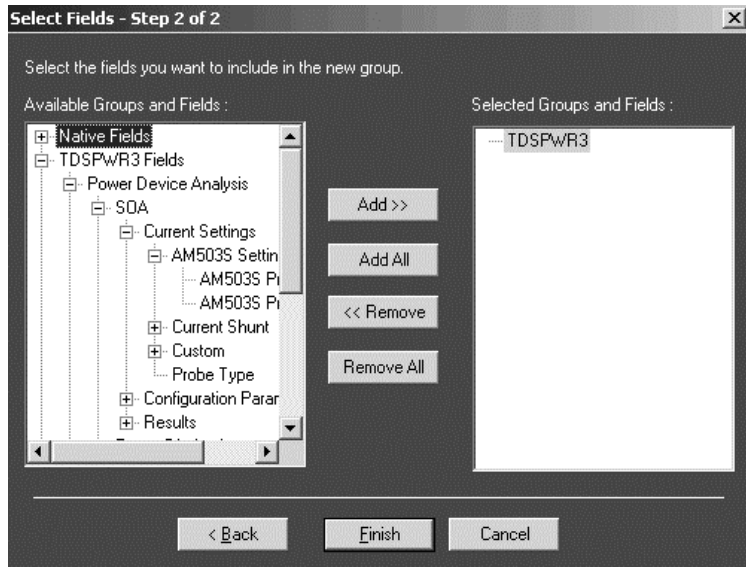


Figure 2- 7: Select fields

4. Using Add>>, Add All, <<Remove, or Remove All, you can select the fields you want to include in the new group.
5. Click Finish.

Editing Custom Groups- Edit > Edit Custom Group

You can edit custom groups.

1. Select Edit > Edit Custom Group.

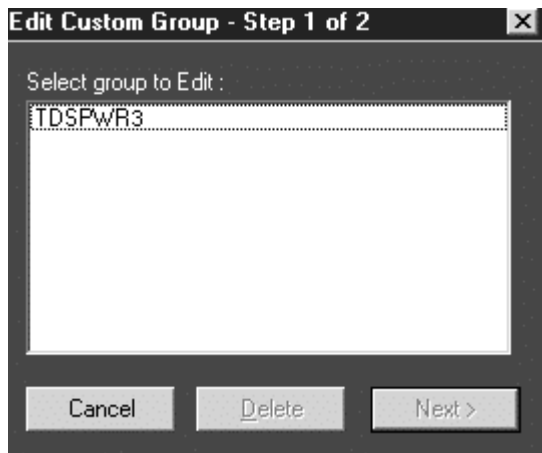


Figure 2- 8: Edit Custom group

2. In Edit Custom Group dialog box, select a group to edit.
3. Click Next.

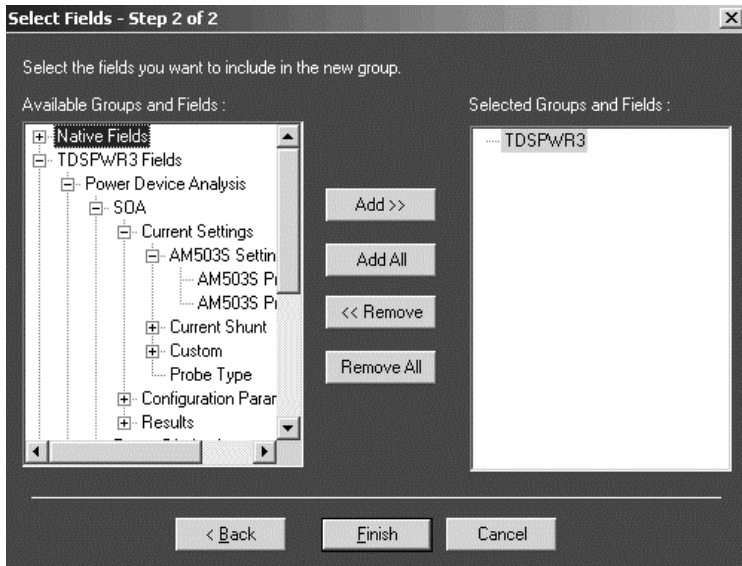


Figure 2-9: Select Fields

4. In Select Fields dialog box, select the fields you want to add or remove from the group using Add>>, Add All, <<Remove, or Remove All.
5. Click Finish.

Delete Custom Groups - Edit > Edit Custom Group

You can delete custom groups.

1. Select Edit > Edit Custom Group.

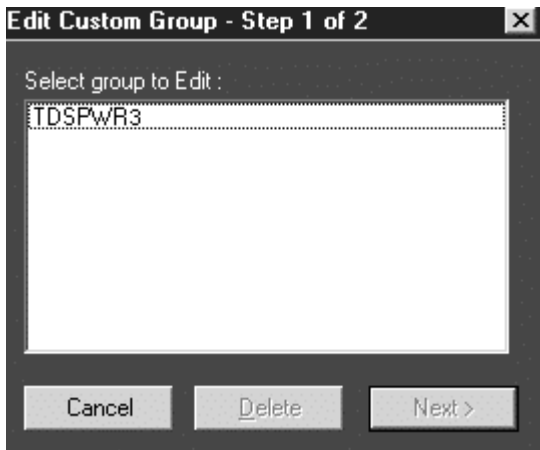


Figure 2-10: Edit Custom Group

2. In Edit Custom Group dialog box, select a group to delete.
3. Click Delete. A message box appears asking you to confirm your choice.
4. Select Yes to delete.

Change Template Size - Edit > Change Template Size

You can change the size and page setup for a template.

1. Select Edit> Change Template Size.

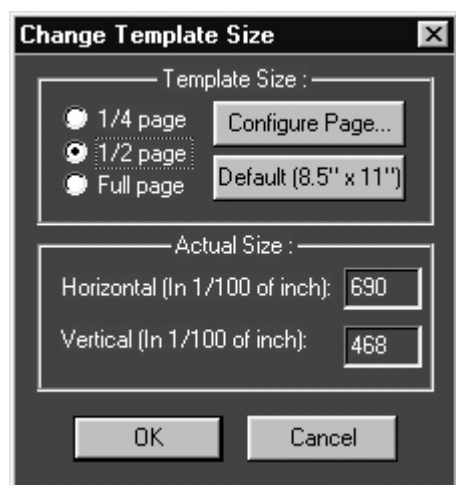


Figure 2- 11: Change Template Size

2. In the Change Template dialog box,
 - Select the Template Size as 1/4 page, 1/2 page, or Full page.
 - If the printer is not available, select the Page Size as Default (8.5" x 11"); otherwise, select Configure Page.

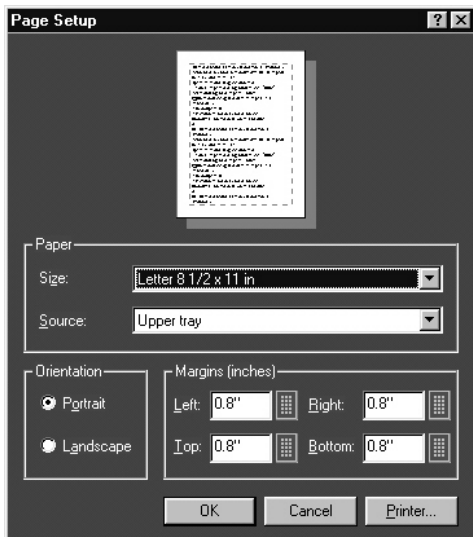


Figure 2- 12: Page Setup

- In Page Setup dialog box, select the paper size, source, orientation, and margins.
- Click OK to return to Change Template Size dialog box.

3. Click OK.

Note: Do not reduce the template size beyond the content filled in the template. You may lose information.

Select All - Edit > Select All

To cut, copy, or delete the fields from the active template, you need to select the fields. You can also select the fields from the active template by clicking CTRL+ selecting the fields.

Find - Edit > Find

You can search for text in the active template.

1. Select Edit > Find.

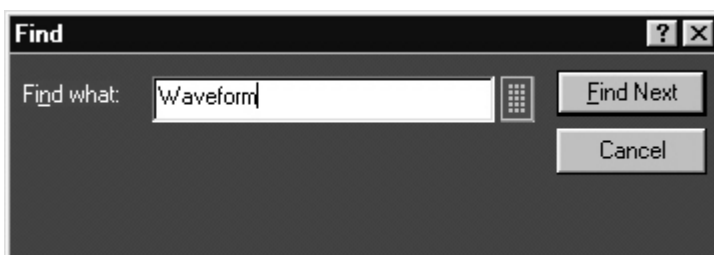


Figure 2- 13: Find

2. In Find dialog box, enter the search string using the Virtual Keyboard.

3. Select Find Next until you find the required search string.

Replace - Edit > Replace

You can search and replace the text in the active template.



Figure 2- 14: Find

1. Select Edit > Replace.
2. In Replace dialog box, enter the search string using the Virtual Keyboard in the Find what field.
3. In Replace with field, using the Virtual Keyboard, enter the replacement string.
4. Select Find Next until you find the required search string.
5. Select Replace to replace one instance of the string.
or
Select Replace All to replace all instances of the string.
6. Click Cancel after you have replaced the strings.

Bring To Front - Object > Bring To Front

You can bring the selected fields to the front.

Send To Back Object > Send To Back

You can send the selected fields to the back.

Show/Hide Text - Object > Show/Hide Text

You can show or hide the captions for the selected fields.

Position Caption-Object > Position Caption to the Left, or on Top

You can position the caption of the selected fields on either the left or on the top.

Editing Caption - Object > Edit Caption

You can edit the caption of the selected parameter or object.

1. Select Object > Edit Caption.

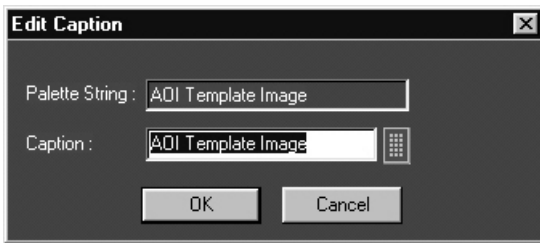



Figure 2-15: Edit Caption

2. In Edit Caption dialog box, select  to enter the caption using the Virtual Keyboard.
3. Click OK.

Change Font Object > Change Font

You can change font for the selected field in the template.

1. Select the fields or fields in the active template.
2. Select Object > Change Font or right click the field to display the options.

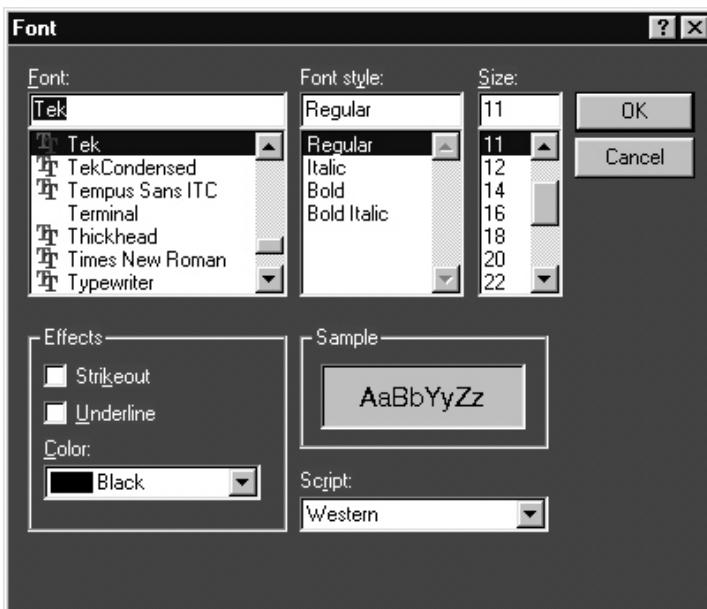


Figure 2-16: Change Font

3. In the Font dialog box, choose the font size, color and style, and effects.
4. Click OK.

Align Fields - Object > Align Fields

You can align the fields to top, bottom, left, or right.

1. Select the fields in the active template.

2. Select Object > Align Fields > Top, Bottom, Left, or Right to align the fields accordingly.

Make Same Size Object > Make Same Size

You can set the selected fields to same height, width, or both.

1. Select the fields in the active template.
2. Select Object > Make Same Size > Height, Width, or Both to make the selected fields the same size.

Report Layout Editor

The Report Layout Editor helps you define the report layout for generating reports. The report layout, once created can be reused for generating multiple reports.

You can select the number of test templates per page and position the templates in the report. The report can have multiple pages with different template sizes. Each template is a sub report with a unique test title. This unique test title helps you select the required template when generating a report. You can define headers and footers for the report layout.

To display the Report Layout Editor, select Define Report Layout > New Report Layout.

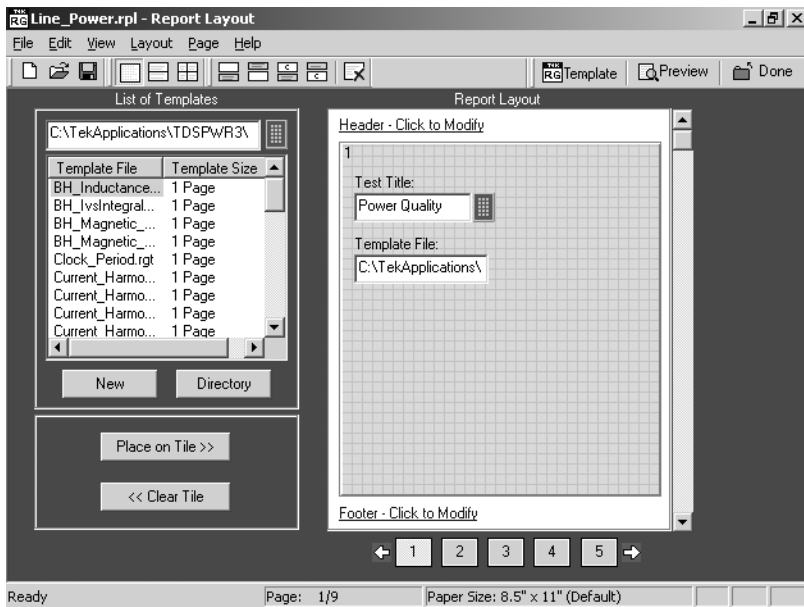


Figure 3-1: Report Layout Window

The Report Layout Editor window has two panes:

- **List of Templates:** Displays a list of templates, template sizes, template folders, and buttons that allow you to clear or place a template in a report layout tile and to create new templates.
- **Report Layout:** Displays the selected report layout and the header, footer definition.

Report Layout Editor Default Settings

Table 3-39 lists the Report Layout Editor Default Settings.

Table 3-39 Report Layout Editor Default Settings

Parameter	Selection	Default setting
Report Layout	Layout	Four tests per page
Page Size	Page Setup	8.5 X 11inches
Layout Editor	None	One page
Go to	Edit	Displays the current page number in the page layout
Font	None	Arial > Regular 9
Default Margin Size	None	Margin size on all sides of the paper is 0.8 inches

Report Layout Editor Window

The Report Layout Editor window comprises a menu bar, a tool bar, a list of templates pane, and a report layout pane.

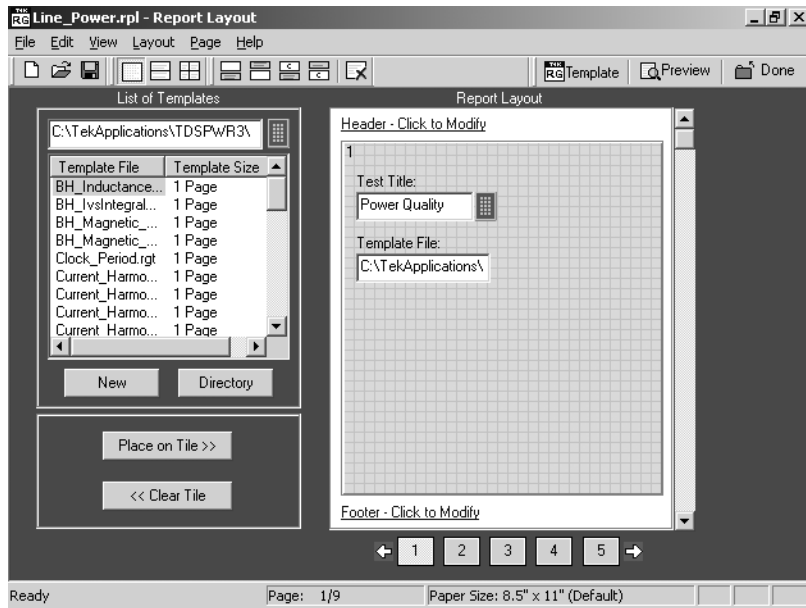


Figure 3-2: Report Layout Window

List of Templates pane

The List of Templates pane displays the path of the template, templates in the folder, file names, and template sizes. You can select the template from this list and place it in the Report Layout pane.

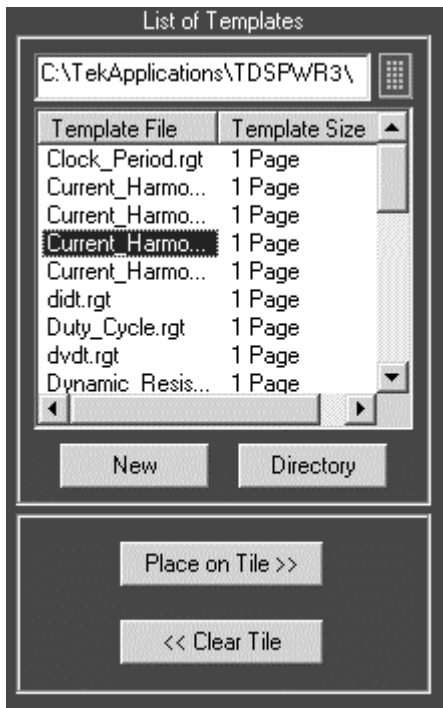


Figure 3-3 List of Templates

In the List of Templates pane, you can do the following:

- Select a different path where you have saved the customized templates by using the Virtual Keyboard or clicking the Directory button that displays a Browse for Folder window.
- Create a new template by selecting New. The Template Editor Window is displayed, where you can create a new template.
- Drag and drop the Template File into the report layout pane's tile or select the template file and click Place on Tile >>.
- Clear the selected tile in the report layout pane by clicking << Clear Tile.

Report Layout pane

Depending on the number of tests selected per page, the Report Layout pane appears as shown by the following figure

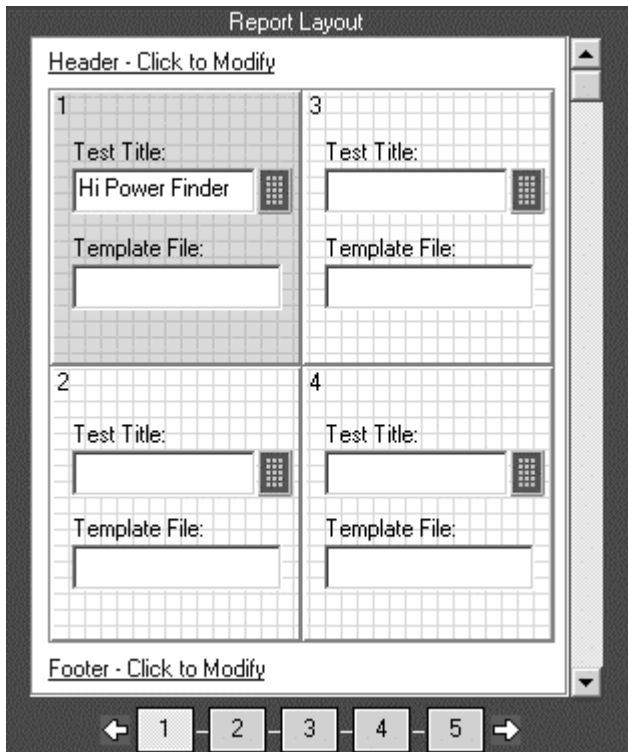


Figure 3-4 Report Layout Pane

- In the Report Layout pane, you can do the following:
 - Specify a title for each test.
 - Define or modify the header and footer.
 - Navigate between pages of the report layout.

Report Layout Editor | File menu

Table 3-40 lists the File menu descriptions.

Table 3-40:File menu descriptions

Menu selection	Description
New	Creates a new report layout.
Open	Opens a report layout file.
Save	Saves changes to the file.
Save As	Saves the report layout to a different file name using the Save as dialog box.
Page Setup	Prints all or part of the contents of the active template.
Configure Page	Configures the paper size, source, orientation, and margins using the Page Setup dialog box.
Default (8.5" X 11")	Configures the page setup to default — 8.5" X 11"
Layout Preview	Displays a sample view of the active report layout as it would be printed.
List of recent report layouts	Opens a previously (recent) opened report layouts.
Exit	Closes the Report Layout Editor.

Report Layout Editor | Edit menu

Table3-41 lists the Edit menu description

Table3-41: Edit menu description

Menu selection	Description
Go To	Goes to the page entered in the Go To Page dialog box.

Report Layout Editor | View menu

A tick mark (✓) appears next to the menu item selected.

Table 3-42 lists the View menu descriptions

Table 3-42: View menu descriptions

Menu selection	Description
Toolbar	Displays or Hides the selected toolbars such as Standard, Page, Layout, and Action.
Status Bar	Displays or Hides the Status bar.
Refresh Template List	Refreshes the Template list in the List of Templates pane.

Report Layout Editor | Layout menu

A tick mark (✓) appears next to the menu item selected.

Table3-43 lists the Layout menu description

Table3-43: Layout menu descriptions

Menu selection	Description
One Test Per Page	Changes the report layout to fit one test per page.
Two Tests Per Page	Changes the report layout to fit two tests per page.
Four Tests Per Page	Changes the report layout to fit four tests per page.

Report Layout Editor | Page menu

Table 3-44 lists the Page menu descriptions

Table 3-44: Page menu descriptions

Menu selection	Description
Insert Blank	
Before Current Page	Inserts a blank page before the current page.
After Current Page	Inserts a blank page after the current page.
Insert Copy	
Before Current Page	Inserts a copy of the current page before the current page.
After Current Page	Inserts a copy of the current page after the current page.
Delete	Deletes the current page.

Report Layout Editor | Help menu

Table 3-45 lists the Help menu descriptions

Table 3-45: Help menu descriptions

Menu selection	Description
Help Topics	Displays the online help.
About Template Editor	Displays version and copyright information.

Report Layout Editor | Standard toolbar

View > Toolbars > Standard

Enable the Standard Toolbar by selecting it in the View >Toolbars menu



- ↓ Creates a report layout file.
- ↓ Opens a report layout file.
- ↓ Saves the report layout file.

Report Layout Editor | Layout toolbar

View > Toolbars > Layout

Enable the Layout Toolbar by selecting it in the View >Toolbars menu



- ↓ Changes the report layout to fit one test per page.
- ↓ Changes the report layout to fit two tests per page.
- ↓ Changes the report layout to fit four tests per page.

Report Layout Editor | Page toolbar

View > Toolbars > Page

Enable the Page Toolbar by selecting it in the View >Toolbars menu.

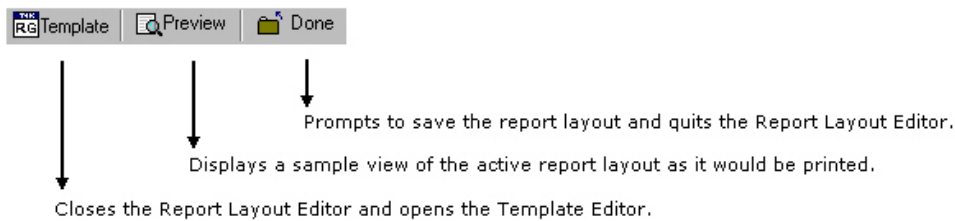


- ↓ Inserts new page before the current page.
- ↓ Inserts new page after the current page.
- ↓ Inserts a copy of the current page before the current page.
- ↓ Inserts a copy of the current page after the current page.
- ↓ Deletes the current page.

Report Layout Editor | Action toolbar

View > Toolbars > Action

Enable the Action Toolbar by selecting it in the View >Toolbars menu.



Using Report Layout Editor

To define a report layout, perform the following steps

1. Set the report layout.
 - Select **Layout > One Test Per Page / Two Tests Per Page / Three Tests Per Page**. The Report Layout pane displays tiles depending on the selected number of tests per page.
2. Add the templates.
 - The List of Templates pane displays the templates in the default directory —
C:\TekApplications\TDSPWR3\ReportGenerator\Templates.
 - From the List of Templates pane, drag and drop the templates into the tiles in the Report Layout pane. You can use the Place on Tile and Clear Tile buttons to move the templates to the tiles and to clear the tiles.
 - If you want to define a new template, select **New** in the List of Templates pane.
 - To browse for a different folder other than the default templates, select **Directory** to display Browse for Folder dialog box. Navigate to the folder where you have the templates stored and select **OK**.
3. Define Header and Footer.
4. Save the report layout.
 - Select **File > Save** to display the Save dialog box. Enter the report layout name and select **Save**.
 - The report layout is saved in the .rpl format.

To edit an existing report layout, perform the following steps:

1. Change the report layout.
 - Select **Layout > One Test Per Page / Two Tests Per Page / Three Tests Per Page**. The Report Layout pane displays tiles depending on the selected number of tests per page.

- The application displays an alert message — All the Test(s) information in the current page will be lost. Do you want to continue?
 - Select Yes to continue or No to stop.
2. Add or Remove the templates.
 - In the Report Layout pane, select the tile to which you want to add or remove the template.
 - To remove a template from the Report Layout, complete the following steps:
 - In the List of Templates pane, select Clear Tile .
 - The application displays an alert message — The test is already filled with data. Do you want to remove it?
 - Select Yes to continue or No to stop.
 3. To add a template to the Report Layout, complete the following steps:
 - The List of Templates pane displays the templates in the default directory —
C:\TekApplications\TDSPWR3\ReportGenerator\Templates.
 - From the List of Templates pane, drag and drop the templates into the tiles in the Report Layout pane. Select the Place on Tile button to move the template to the selected tile.
 - If you want to define a new template, select New in the List of Templates pane.
 - To browse for a different folder other than the default templates, select Directory to display the Browse for Folder dialog box. Navigate to the folder where you have the templates stored and select OK.
 4. Modify Header and Footer.
 5. Save the report layout.
 - Select File> Save to display the Save dialog box. Enter the report layout name and select Save.
 - The report layout is saved in the .rpl format.

Note: Each report can only have up to five pages.

Configure Page

File> Page Setup> Configure Page

You can configure the paper size, source, orientation, and margins.

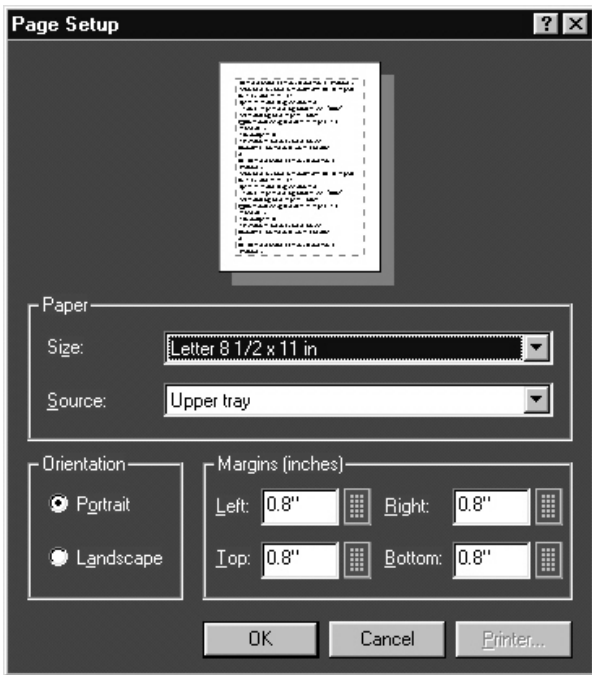


Figure 3-5 Page Setup

After you have configured the page setup, select OK.

Go To Page

Edit> Go To

You can go to different pages in the report layout using the Go To Page dialog box.

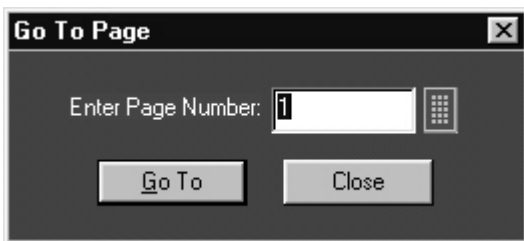



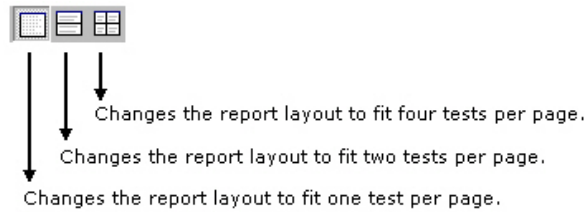
Figure 3-6 Go To Page

1. In the Enter Page Number field, enter the page number or select  to display the Virtual keyboard.
2. Select Go To. The Report Layout pane displays the relevant page.

Change Report Layout

You can change the report layout to fit one, two or four tests per page.

Layout > One Test Per Page / Two Tests Per Page / Four Tests Per Page




Header/Footer Definition

To modify Header Definition, do the following



Figure 3-7 Header/Footer Definition

1. In the Report Layout pane, click Header - Click to Modify
2. In the Header/Footer Definition dialog box, select the header position - Header Left, Header Center, or Header Right.
3. Enter the Header definition in the text box.
 Select  to display the Virtual Keyboard. In the Virtual Keyboard, select the text and select Enter.
 or
 To insert the special text, select the Insert Special Text button to display a sub menu. Select Date, File Name, Author, Page X of Y, Page X, or Logo.
4. Select Set Font to change the font style, size, effects, color, and script for each field separately, then select OK.
5. In the Header/Footer Definition dialog box, select OK.

To modify Footer Definition, do the following:

1. In the Report Layout pane, click Footer - Click to Modify.



Figure 3-8 Header/Footer Definition

2. In the Header/Footer Definition dialog box, select the footer position - Footer Left, Footer Center, or Footer Right.

3. Enter the Footer definition in the text box.

Select  to display the Virtual Keyboard. In the Virtual Keyboard, select the text and select Enter.

or

To insert the special text, select the Insert Special Text button to display a sub menu. Select Date, File Name, Author, Page X of Y, Page X, or Logo.

4. Select Set Font to change the font style, size, effects, color, and script for each field separately, then select OK.

5. In the Header/Footer Definition dialog box, select OK.

Insert Pages

1. Select Page> Insert Blank > Before Current Page / After Current Page to insert a new page before the current page or after the current page

2. Select Page> Insert Copy > Before Current Page / After Current Page to insert copy of the current page before the current page or after the current page.

Note: *When you insert a copy of a page before or after the current page, the layout of the current page is the same layout as the new page.*

Report Viewer

The Report Viewer allows you to view the generated report.

Under the Generate Report tab, select Load Report or Generate Report to display the Report Viewer and browse for the report that you want to view or generate.

Report Viewer Window

The Report Viewer window comprises a menu bar, a toolbar, an align/size bar, and a client area

Report Viewer | File menu

Table 3-46 lists the File menu descriptions.

Table 3-46:File menu descriptions

Menu selection	Description
Open	Opens a template file.
Save	Saves changes to the file.
Save As	Saves the template under a different file name using the Save as dialog box.
Print	Prints all or part of the contents of the active template.
Print Preview	Displays a sample view of the active template as it would be printed.
Print Setup	Prompts you to set up the Printer.
Export to RTF	Exports the report in .rtf (rich text format).
List of recent templates	Opens a previously (recent) opened template.
Exit	Closes the Report Viewer.

Report Viewer | Edit menu

The available edit menu selections depend on whether a field is selected or not.

Table 3-47 lists the Edit menu descriptions

Table 3-47: Edit menu Descriptions

Menu selection	Description
Cut	Cuts the selected fields and places it on the clipboard.
Copy	Copies the selected fields to the clipboard.
Paste	Pastes the clipboard content.
Delete	Deletes the selected fields.
Select All	Selects all the fields.
Add Text Field	Adds a text field to the report.
Find	Finds the data matching the search criteria entered.
Replace	Replaces the data matching the search criteria with the specified data.
Go To	Goes to the page number specified in the Go To Page dialog box.

Report Viewer | View menu

A tick mark (✓) appears next to the menu item selected.

Report Viewer | Object menu

The available object menu selections depend on whether a field in the client area is selected or not

Table3-49 lists the Object menu descriptions

Table3-49 -Object menu Descriptions

Menu selection	Description
Bring To Front	Brings the selected field to front.
Send To Back	Sends the selected field to back.
Hide Text / Show Text	Shows or hides the caption of the selected field.
Position Caption on Top/to the Left	Positions the caption of the selected field to left or on top.
Edit Text	Allows you to edit the text in the selected field.
Change Font	Allows you to change the font of the selected field or the caption using the Change Font dialog box.
Align Fields	Aligns fields to the top, bottom, left, or right.
Make Same Size	Resizes the selected fields to the same size by height, width, or both.

Report Viewer | Help menu

Table3-50 lists the Help menu description

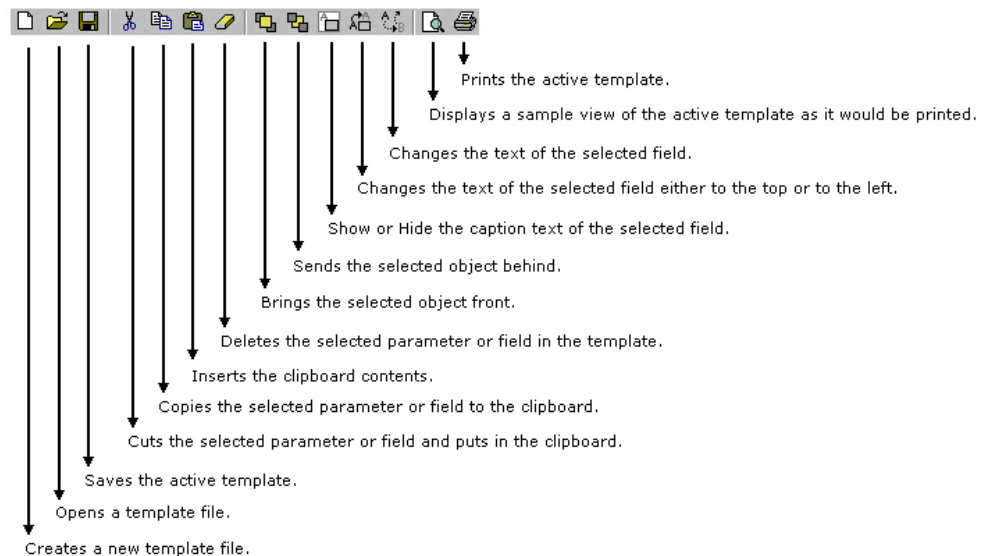
Table3-50:Help menu Descriptions

Menu selection	Description
Help Topics	Displays the online help.
About Report Viewer	Displays version and copyright information.

Report Viewer | Standard Toolbar

View > Toolbar

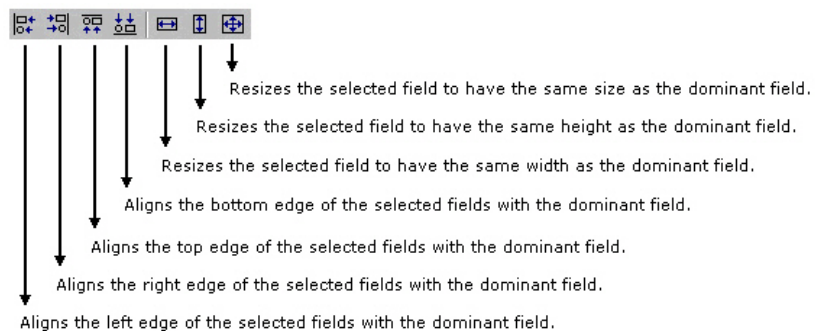
Enable the Standard Toolbar by selecting it in the View >Toolbar menu.



Report Viewer | Align or Size bar

View > Align/Size bar

Enable the Align/Size Toolbar by selecting it in the View >Align/Size bar menu.



Report Viewer | Status bar

The Status bar displays the status of the application and tool tips for selected options

Report Viewer | Separators


View > Separators


Shows or hides the template separators.


Using Report Viewer


Click on each of these link to use the Report Viewer:

- To view a report
 1. Select File> Open. The Open dialog box displays all the reports in the default directory —
C:\TekApplications\TDSPWR3\ReportGenerator\Reports.
 2. Select the report that you want to view and select Open.
 3. The Report Viewer displays the selected report.

- To edit text
 1. Select Edit > Add Text Field. The Edit Text dialog box appears.
 2. In the Text field, enter the text or click  to display the Virtual keyboard. In the Virtual Keyboard, enter the text and select Enter.
 3. In the Edit Text dialog box, select OK.

- To find text
 1. Select Edit > Find. The Find dialog box appears.
 2. In the Find what field, enter the text or click  to display the Virtual keyboard. In the Virtual Keyboard, enter the text and select Enter.
 3. In the Find dialog box, select Find Next until you find that text that you are searching for.

- To replace text
 1. Select Edit > Replace. The Replace dialog box appears.
 2. In the Find what field, enter the text or click  to display the Virtual keyboard. In the Virtual Keyboard, enter the text and select Enter.

3. In the Replace with field, enter the text or click  to display the Virtual keyboard. In the Virtual Keyboard, enter the text and select Enter.
4. In the Replace dialog box,
 - Select Find Next to find the text that you are searching for.
 - Select Replace to replace one instance of the text that you want to replace.
 - Select Replace All to replace all instances of the text that you want to replace.
 - Select Cancel to cancel the operation and close the dialog box.

You can select some objects and bring to front or send to back. You can show/hide text, position caption to the left, or on top. You can edit text, or change font. You can align selected fields or make the selected fields to same size. You can export a report as an rtf.

Export to RTF

File> Export to RTF

You can export a report as an .rtf (rich text format) file.

Find

Edit > Find

You can search for text in the report.

Select Edit > Find.

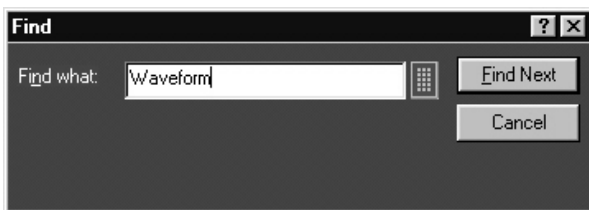


Figure 4-3: Find

In Find dialog box, enter the search string using the Virtual Keyboard.

Select Find Next until you find the required search string.

Replace

Edit > Replace

You can search and replace the text in the report.



Figure 4-4: Find

1. Select Edit to replace.
2. In Replace dialog box, enter the search string using the Virtual Keyboard in the Find what field.
3. In Replace with field, using the Virtual Keyboard enter the replacement string.
4. Select Find Next until you find the required search string.
5. Select Replace to replace one instance of the string.
or
Select Replace All to replace all instances of the string.
6. Click Cancel after you have replaced the strings.

Bring To Front

Object > Bring To Front

Send To Back

Object > Send To Back

You can send the selected fields to the back.

Show/Hide Text

Object > Show/Hide Text\

You can show or hide the captions for the selected fields.

Position Caption

Object > Position Caption to the Left, or on Top

You can position the caption of the selected fields on either the left or on the top

Edit Caption

Object > Edit Caption

You can edit the caption of the selected parameter or object.

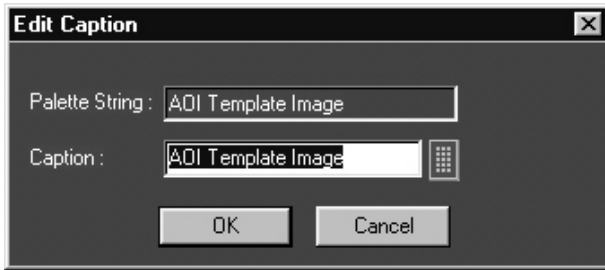



Figure 4-5: Edit Caption

1. Select Object > Edit Caption.
2. In Edit Caption dialog box, select  to enter the caption using the Virtual Keyboard.
3. Click OK.

Change Font

Object > Change Font

You can change font for the selected field in the report.

1. Select the fields or fields in the report.
2. Select Object > Change Font or right-click on the field to display the options

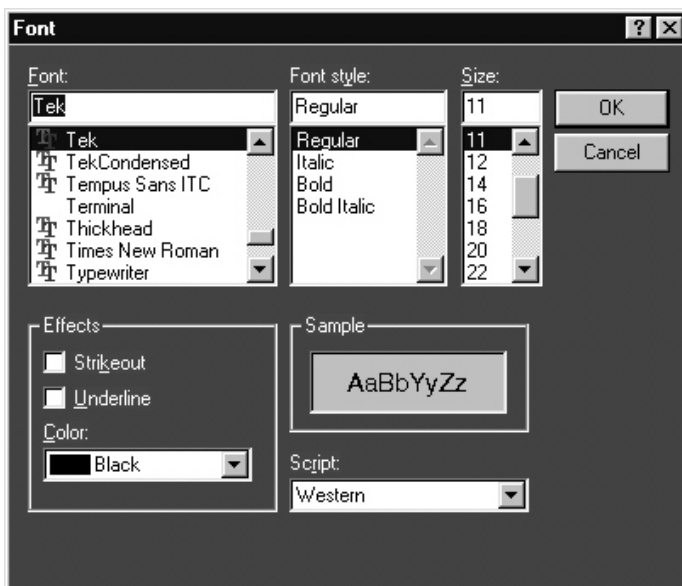


Figure 4-6: Change Font

3. In the Font dialog box, choose the font size, color, style, and effects.
4. Click OK.

Make Same Size

Object > Make Same Size

You can make the selected fields the same height, width, or both.

1. Select the fields in the report.
2. Select Object > Make Same Size > Height, Width, or Both to make the selected fields to the same size.

Align Fields

Object > Align Fields

1. Select the fields in the report.
2. Select Object > Align Fields > Top, Bottom, Left, or Right to align the fields accordingly.

Using Report Generator

Create or edit a test template

Report > Report Generator > Define Test Template

You can create a new test template or edit an existing template.

To create a new test template:

Under the Define Test Template tab, select New Test Template.

1. The Template Editor window appears with an empty client area.
2. Create the template using the Palette list.
3. After you have completed creating a new test template, select Done.

See Template Editor for more information about Template Editor.

To edit an existing test template:

1. Under the Define Test Template tab, select Browse.
2. The open window displays the existing factory default templates and customized templates in
C:\TekApplications\TDSPWR3\ReportGenerator\Templates.

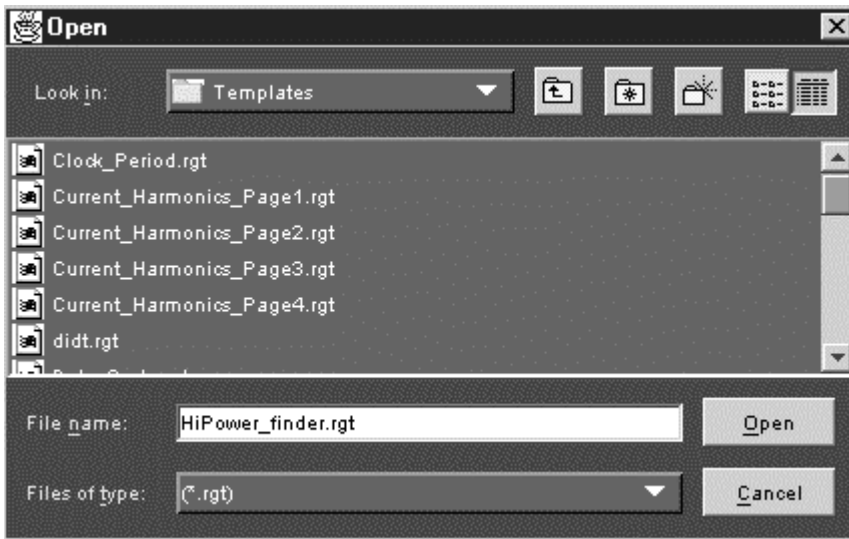


Figure 5- 1: Open Window

3. Select the template that you want to use and select Open.
4. In the Define Test Template tab, select Edit Template.
5. The Template Editor window appears with client area displaying the selected template.
6. Edit the template using the Palette list.
7. After you have completed editing an existing test template, select Done.

See Template Editor for more information about Template Editor.

Define or edit a report layout

Report > Report Generator > Define Report Layout

You can create a new report layout or edit an existing report layout.

To create a new report layout:

1. The Report Layout Editor window appears with an empty report layout area.
2. Create the report by defining the report layout and dragging and dropping the templates to the report layout area.
3. After you have completed creating a new report layout, select Done.

See Report Layout Editor for more information about Report Layout Editor.

To edit an existing report layout:

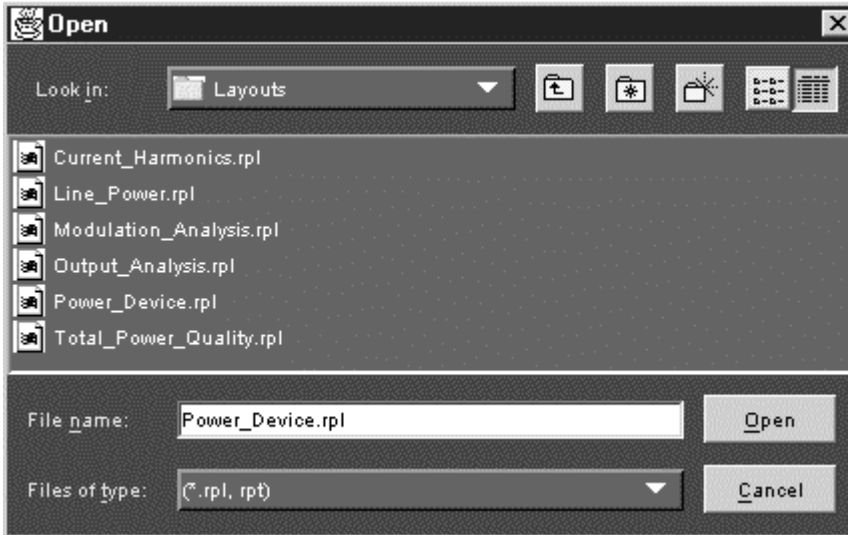


Figure 5-2: Open window

1. Under the Define Report Layout tab, select Browse.
2. The Open window displays the existing factory default report layout and customized report layouts in
C:\TekApplications\TDSPWR3\ReportGenerator\Layouts.
3. Select the report layout that you want to use and select Open.
4. In the Define Report Layout tab, select Edit Layout.
5. The Report Layout Editor window appears with report layout area displaying the customized report layout and selected template files.
6. Edit the report layout using the List of Templates and defining the Report Layout.

After you have completed editing an existing report layout, select Done.

See Report Layout Editor for more information about Report Layout Editor.

Generate, print or view a report

Report > Report Generator > Generate Report

You can generate, print, or view a report.

To generate a report

Under the Generate Report tab, select Browse.

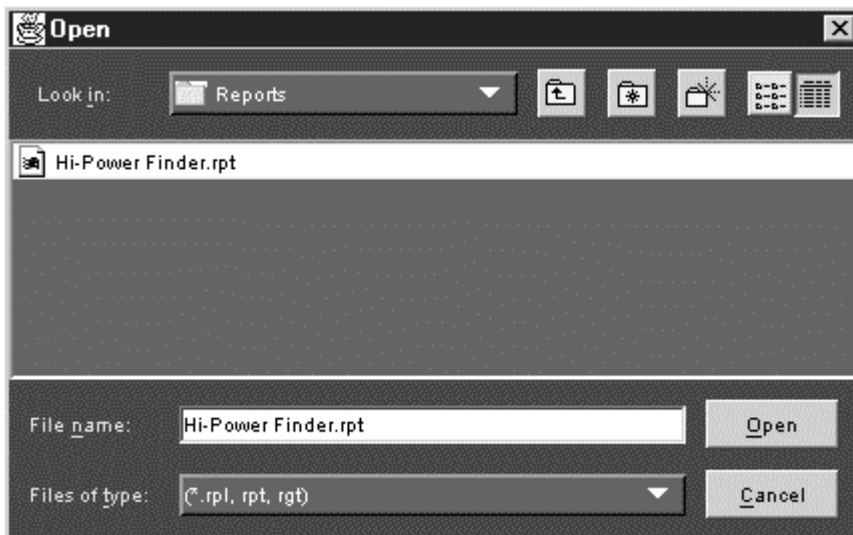


Figure 5-3: Open window

1. The Open window displays the existing reports in C:\TekApplications\TDSPWR3\ReportGenerator\Reports.
2. Select the report that you want to generate and select Open.
3. Under the Generate Report tab, select Generate Report.
4. In the Assign Data to Report dialog box, select a test template in this report to assign the current data from your measurement application.
5. Select Assign. The Report Viewer displays the report with current data from the application. You can choose to export to the report in an rtf format.

To print a report

Under the Generate Report tab, select Browse.

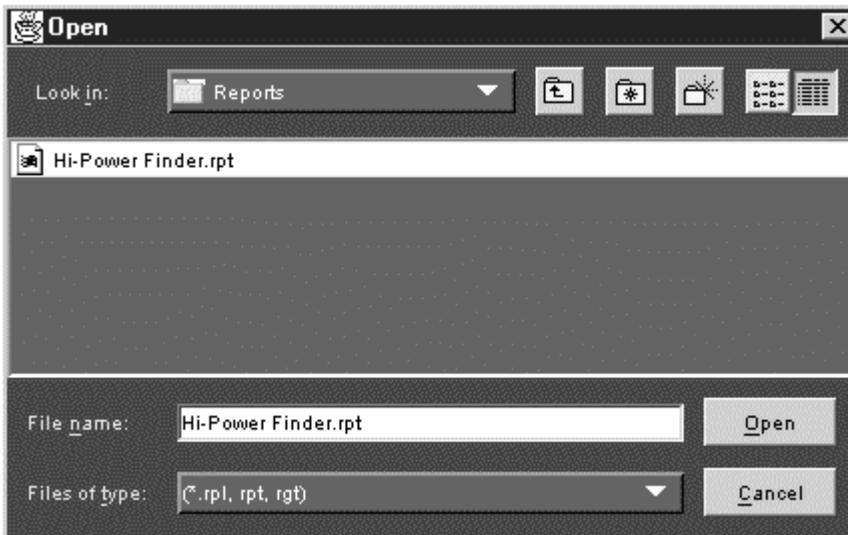


Figure 5-4: Open window

1. The Open window displays the existing reports in C:\TekApplications\TDSPWR3\ReportGenerator\Reports.
2. Select the report that you want to print and select Open. The Report Viewer displays the selected report with current data from the application.
3. If the page settings do not match the page settings for the Report, a Page Size Mismatch message box displays a message — The current page settings do not match the page settings for the Report. Do you want to continue?
 - Click Yes to continue.
 - Click No to stop printing the report.

If the printer is available, the report is printed.

Table 3-48 lists the View menu descriptions

Table 3-48: View menu Descriptions

Menu selection	Description
Toolbar	Displays/Hides the Standard toolbar.
Align/Size Bar	Displays/Hides the Align/Size toolbar.
Status Bar	Displays/Hides the Status bar.
Separators	Displays/Hides the separators.

-
- | | | |
|------------------------------------------------------------------------------------------------------------------------------------------------------------------------------------------------------------------------------------------------------------------------------------------------------------------------------------------------------------------------------------------|---------------------------------------------------------------------------------|-------------------------------------------------------------------------------------------------------------------------------------------------------------------------------------------------------------------------------------------------------------------------------------------------------------------------------------------------------------------------------------------------------------------------------------------------------------------------------------------------------------------------------------------------------------------------------------------------------------------------------------------------------------------|
| <ul style="list-style-type: none"> Edit menu, 35 Help menu, 11 Layout toolbar, 12 Object menu, 35 Report Generator, 1 <ul style="list-style-type: none"> Shortcut Keys, 2 Starting, 1 Report Generator, 1, 2 Report Layout Editor Parameters, 22 Report Layout pane, 24 | <p>E</p> <p>H</p> <p>L</p> <p>O</p> <p>R</p> | <ul style="list-style-type: none"> Report Viewer Window, 34 RLE_File menu, 25 RLE_Help menu, 26 RLE_Page menu, 26 <p>S</p> <ul style="list-style-type: none"> Separators, 37 Shortcut Keys <ul style="list-style-type: none"> Report Generator, 2 Shortcut Keys, 2 Size bar, 36 Standard Toolbar, 36 Starting <ul style="list-style-type: none"> Report Generator, 1 Starting, 1 Status bar, 37 <p>V</p> <ul style="list-style-type: none"> View menu, 9 |
|------------------------------------------------------------------------------------------------------------------------------------------------------------------------------------------------------------------------------------------------------------------------------------------------------------------------------------------------------------------------------------------|---------------------------------------------------------------------------------|-------------------------------------------------------------------------------------------------------------------------------------------------------------------------------------------------------------------------------------------------------------------------------------------------------------------------------------------------------------------------------------------------------------------------------------------------------------------------------------------------------------------------------------------------------------------------------------------------------------------------------------------------------------------|